



TELESCOPIC HANDLER

Model: **MIH 7.35**

Technical Specifications



NEW

ENGINE

Brand & Model	PERKINS 904D-E36TA @ Commonrail	PERKINS 904J-E36TA @ Commonrail
Emission	Stage 5	Stage 5
No. Of Cylinders	4	4
Displacement	3621 ccm	3621 ccm
Power Rating	75 hp / 55,4kW @2300rpm	100 hp / 74,4kW @2300rpm
Torque Rating	424Nm@1200rpm	430Nm@1500rpm
Aspiration	Commonrail with direct injection @ Turbocharged aftercooler	Commonrail with direct injection @ Turbocharged aftercooler
Cooling	Water cooled	Water cooled

TRANSMISSION

Type Of Transmission	Hydrostatic transmission with variable piston pump @ 2-speed
Gearbox Speed (Fwd/Rvs)	2 / 2
Max. Travelling Speed	35 km/h (75 kW)/30 km/h (55 kW)
Steering Modes	2 WS, 4WS, 4WS-Crab

HYDRAULIC SYSTEM

Hydraulic Pump	Load sensing type variable piston pump
Main Control Valve	Electro-hydraulic control
Max. Flow	100 l/min
System Pressure	240 bar
Joystick Control	7 in 1 @ FNR & Gear up-down shift

FLUID CAPACITIES

Fuel Tank	120 l
Hydraulic Tank	110 l
Standart Machine Operating Weight	8.100 kg

CYCLE TIMES

Lifting	7.00 s
Lowering	5.60 s
Extension	8.50 s
Retraction	6.70 s
Crowd	3.00 s
Dump	2.80 s

PERFORMANCE

Model Family	7 M
Max. Lifting Capacity	3500 kg
Max. Lifting Capacity at Full Height	2850 kg
Capacity at Max. Forward Reach	1250 kg
Max. Lifting Height	7.10 m
Max. Forward Reach	4.15 m
Max. Towable Trailer Weight (kg) (With/Without Brake)**	3000-14000 kg

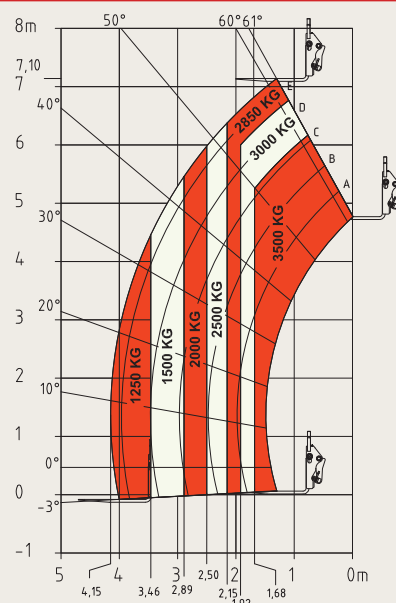
AXLES, BRAKE SYSTEM and TYRES

Axles	LSD type rigid front axle & swinging type rear axle
Brake System	Front / Rear multi-disc type oil bath & with inching
Parking Emergency Brake	Negative parking brake (SAHR)
Tires	400/80-24

NOISE

Noise at Driving Position LpA*	80 db(A)
Noise to Environment LwA*	102 db(A)

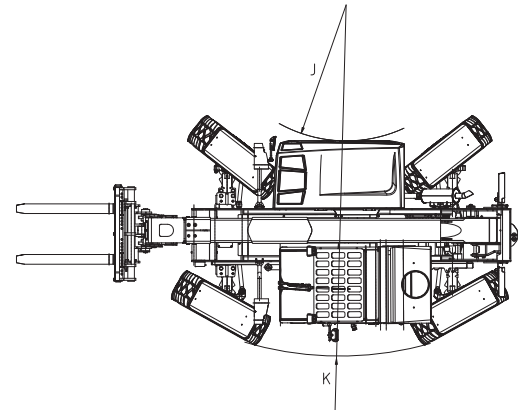
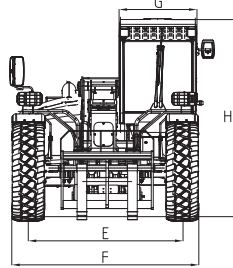
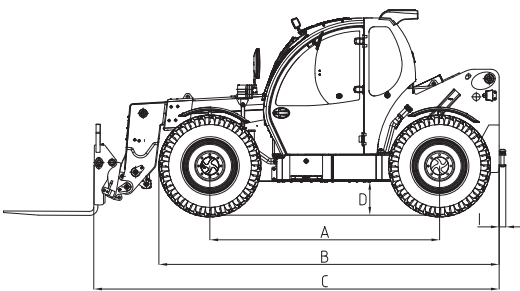
Load Chart (On Tires)





DIMENSIONS

A-Wheelbase	2800 mm
B-Overall Length To Front Face of Tyres	4150 mm
C-Overall Length To Carriage	4950 mm
D-Ground Clearance	400 mm
E-Inside Tyre Width	1930 mm
F-Overall Width	2345 mm
G-Overall Cab Width	971 mm
H-Overall Height	2500 mm (w/o AC 2400 mm)
I-Tow Bar	80 mm
J- Turning Radius (Engine Hood)	1250 mm
K- Turning Radius (Over Tyres)	3800 mm
Standard Forks ***	120 x 50 x 1200 mm



The information, visual, model and equipments features indicated in this document can be offered as standard or optional depending on the country and region. MST, reserves all the rights to make changes without notice for the information, values and designs contained this document.

MST CONSTRUCTION EQUIPMENT YATIRIM A.Ş.

4. Organize Sanayi Bölgesi 83426 Cad. No:1

Başpınar / Gaziantep / TÜRKİYE

Phone: +90 342 211 59 00 444 2 767

Fax: +90 342 357 00 32 export@mst-tr.com



A MEMBER OF



CORPORATION

mstismakinalari mstismakinalari MST İş Makinaları

mstmakina MST İş Makinaları

www.mst-tr.com

www.asko.com.tr